



# Bird Aware Solent

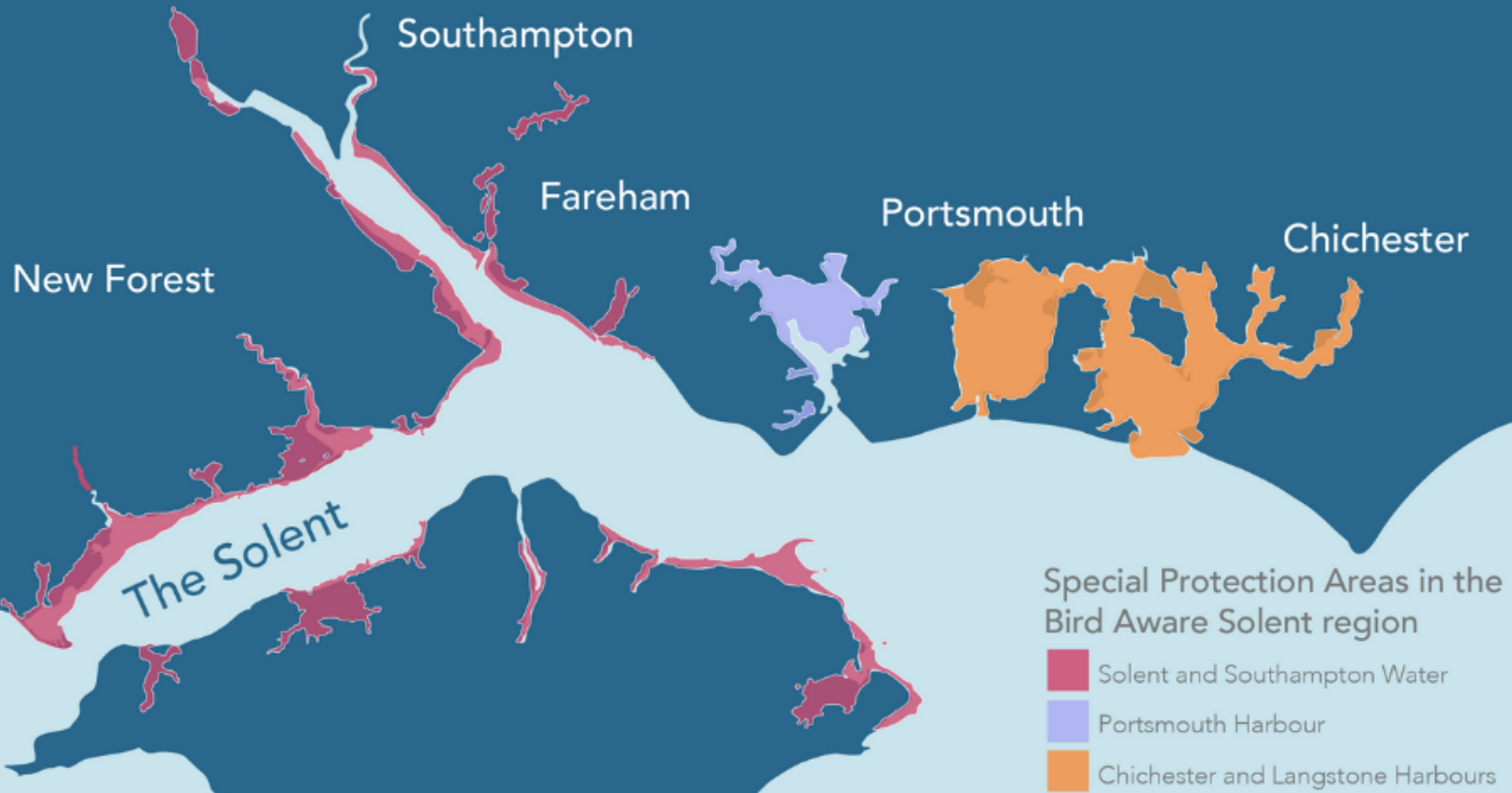
Anna Parry  
Partnership Manager



# The Solent Coast



Three Special Protection Areas (SPAs) to safeguard overwintering birds



# Key Species

Each winter over 125,000 waders and wildfowl return here from as far as the Arctic. This makes the Solent coast of worldwide importance for birds.



Dark-bellied  
brent geese



Black-tailed  
godwit



Teal



Ringed plover

# Disturbance is real



Photos courtesy of T D Codlin

# 2009/13 Research Findings

- Planned new housing will increase visitor numbers to the coast by 13% in next 15 years.
- Predicts an increase in bird mortality and a decline of bird population numbers over time.
- 71% of disturbance is caused by walkers (30%) and dog walkers (41%).
- Level of disturbance to birds is determined by how people behave rather than numbers per se.



# The Solent Recreation Mitigation Partnership



# Public Orientated Brand



# Definitive Strategy

## Endorsed December 2017

Mitigate housing planned till 2034 (plus 80 years in-perpetuity element)



Creating a coastline where people's recreation does not impact overwintering birds



# Tools to Mitigate



- Ranger Team
- Communication / education
- Dog initiatives
- Codes of conduct
- Site specific projects
- Suitable Alternative Natural Greenspaces



# Monitoring



# Ranger Team



# Traditional Response



Dogs off leads cause 47% of all major flights



**DOGS MUST BE KEPT ON A LEAD AT ALL TIMES**



# A New Approach



# Alternative Sites



Alver Valley Country Park



Shoreburs Greenway



River Hamble Country Park

# Site Specific Projects



England Coast Path



River Hamble Wildlife Aware Signs

# Ball-Park Annual Costs



Rangers	£270k
Other staff	£105k
On-the-ground projects	£400k
Operational budget including monitoring	£90k
In-perpetuity funding	£950k
<b>Total</b>	<b>£1,915k</b>





# Developer Contribution

Charged on a sliding scale based on bedroom numbers:

- 1 bed - £390
- 2 bed - £563
- 3 bed - £735
- 4 bed - £864
- 5 bed - £1,014

75% of all visitors to the Solent coast originate from within a 5.6km zone



# Developer Contribution

Other similar scheme costs:

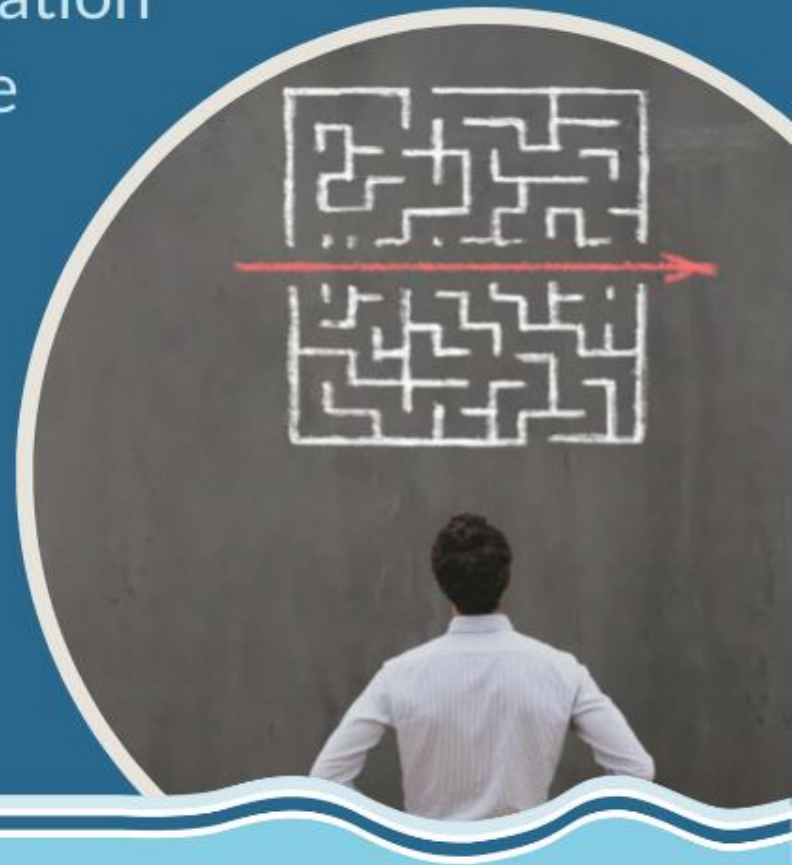
- New Forest SPA: £2,050 to £5,050 per dwelling
- Thames Basin Heaths SPA: £2,000-£15,000 per dwelling



# Developer View

"Providing a contribution is simpler than having to provide our own mitigation package, which can be both time consuming and costly.

"The Strategy allows us to understand what our contribution will be from the outset and to plan accordingly."



# Award Winning Project



The **PLANNING AWARDS 2019**  
*Celebrating excellence in planning and placemaking*

**WINNER**

**IEMA** Transforming the world to sustainability

**IEMA Sustainability Impact Awards 2020**

Inspiration | Innovation | Transformation

**WINNER**



FOR HELPING  
THE ENVIRONMENT  
WIN

**The Drum Awards Social Media**

Highly Commended 2020

**CIEM AWARDS 2020**  
**HIGHLY COMMENDED**



**THE ST ANDREWS PRIZE FOR THE ENVIRONMENT**  
Shortlisted

# Thanks - stay in touch!



Sign up to our newsletter:

